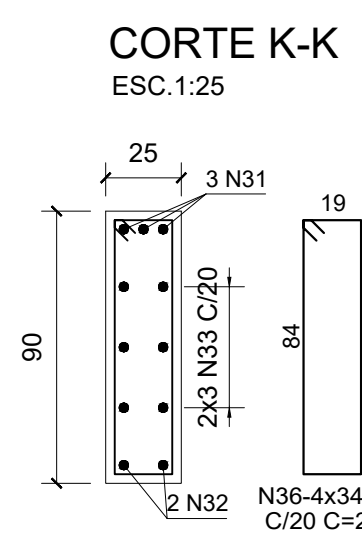
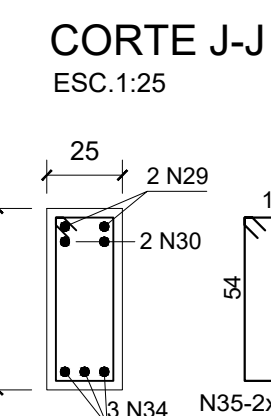
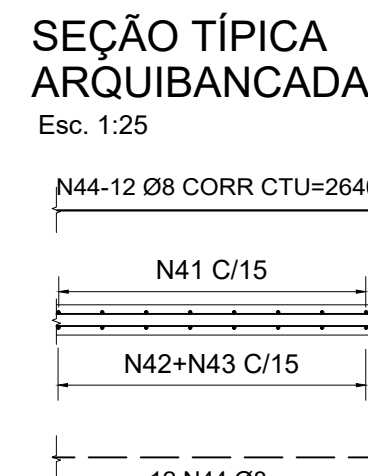
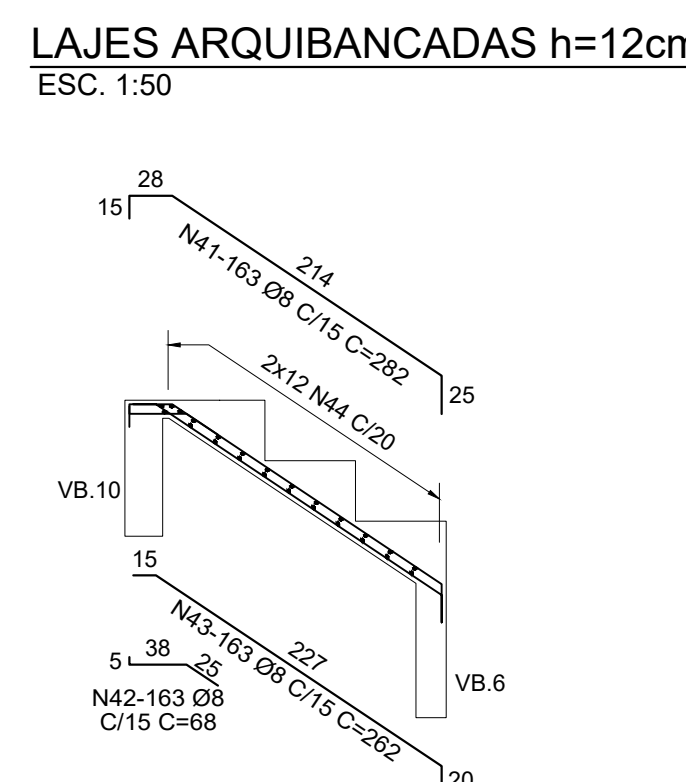
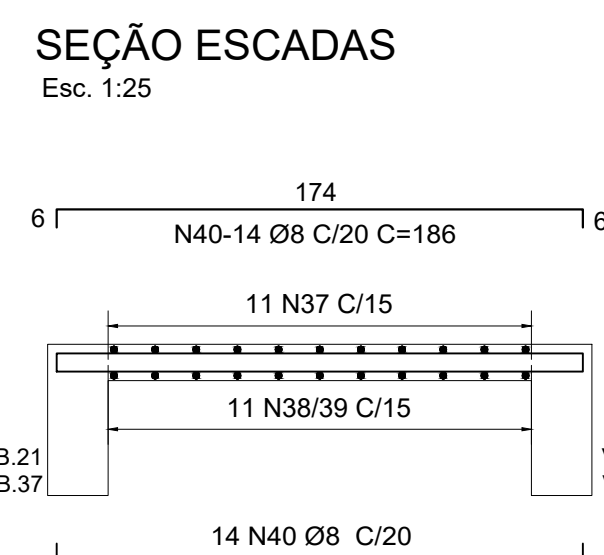
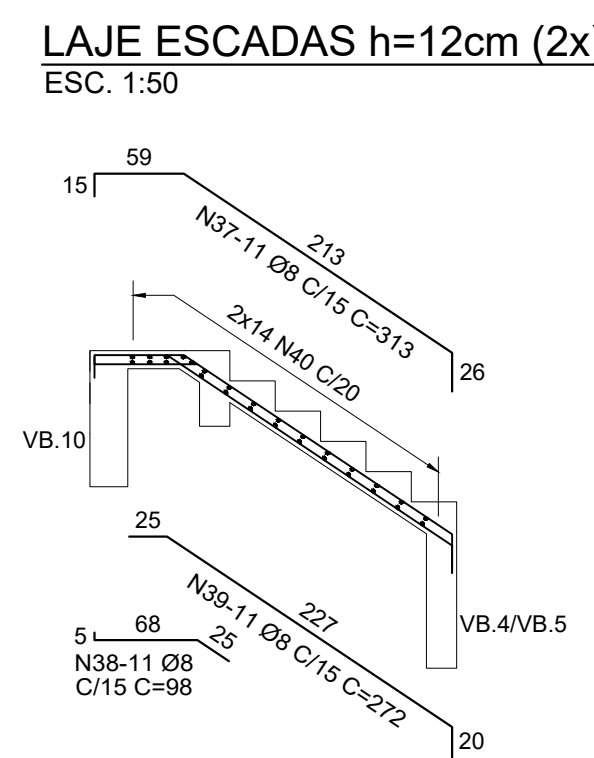
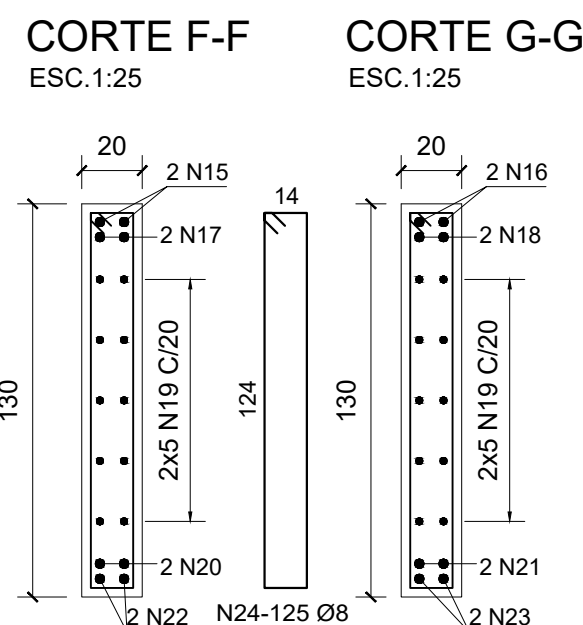
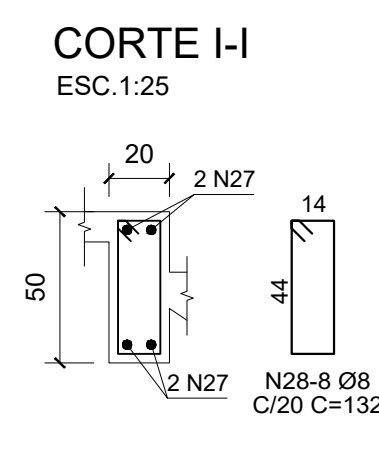
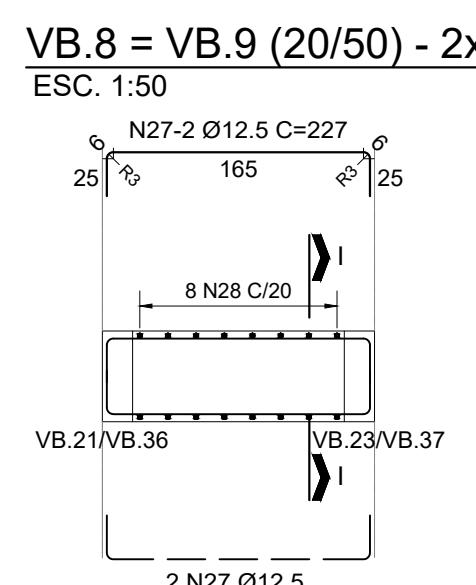
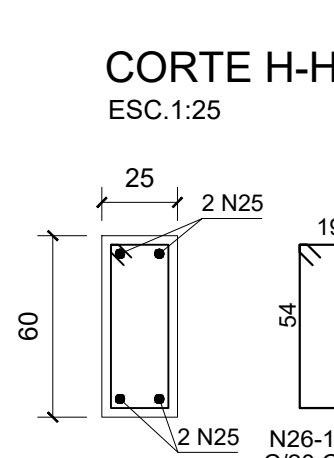
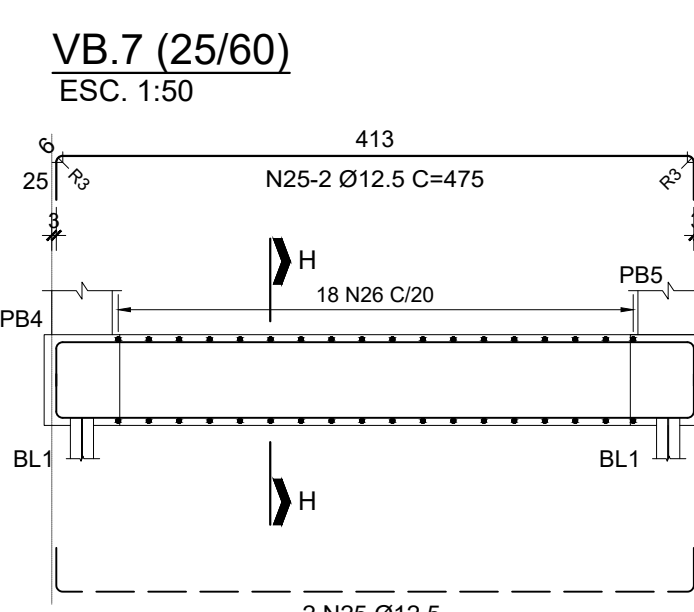
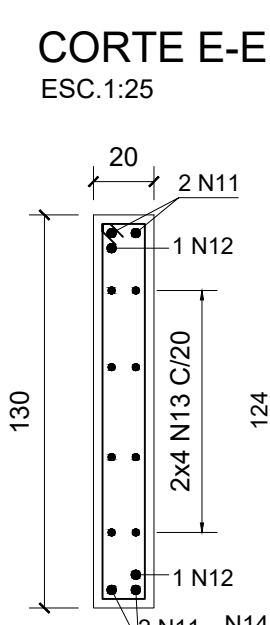
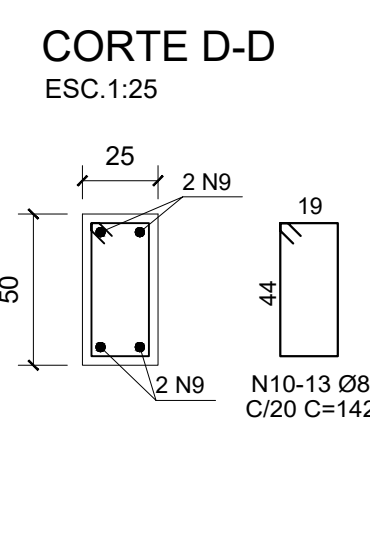
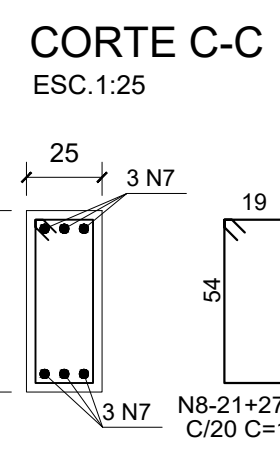


N	Ø	Q	COMPRIMENTO	
			UNIT (mm)	TOTAL (mm)
1	6	1200		
2	16	9	795	7155
3	16	4	1000	4000
4	16	6	817	4902
5	16	8	810	6480
6	8	198	162	32076
7	12,5	6	1072	6432
8	8	48	162	7776
9	12,5	4	132	1288
10	8	5	342	1710
11	8	8	227	1816
12	12,5	4	168	872
13	10	16	202	3232
14	6,3	20	290	5800
15	12,5	4	873	3492
16	12,5	2	961	1922
17	12,5	4	1014	4056
18	12,5	2	621	1242
19	12,5	4	CORRIDO	2096
20	12,5	4	1204	2968
21	16	12	720	2604
22	12,5	4	598	2382
23	12,5	4	790	3160
24	12,5	2	475	950
25	12,5	4	275	1100
26	8	18	162	2816
27	12,5	8	132	1816
28	8	5	232	2160
29	16	4	1200	4800
30	16	4	800	3200
31	16	6	1172	7020
32	16	11	810	8910
33	16	8	CORRIDO	1980
34	16	6	819	4908
35	8	68	162	11016
36	8	138	222	30102
37	8	22	313	6886
38	8	22	8	176
39	8	22	272	5984
40	8	56	186	10416
41	8	163	282	45456
42	8	163	18	11706
43	8	163	202	42246
44	8	24	CORRIDO	63360

RESUMO CA-50			
Ø(mm)	P(kg/m)	COMPR.(m)	PESO(kg)
6.3	0.25	58.00	15
8	0.40	3129.92	1252
10	0.63	488.56	308
12.5	1.00	355.24	355
16	1.60	561.87	899
TOTAL:			2629



NOTAS:

- 1 - MEDIDAS EM CENTÍMETRO.
- 2 - MATERIAIS:
 - CONCRETO ESTRUTURAL $f_{ck} = 30 \text{ MPa}$ (FATOR A/C=0,5)
 - AÇO CA50
- 3 - COBRIMENTO DAS ARMADURAS:
 - c = 3,0 cm
- 4 - VERIFICAR TODAS AS MEDIDAS NA OBRA.

5 - O CONTROLE TECNOLÓGICO PARA GARANTIA DA QUALIDADE DOS MATERIAIS E SERVIÇOS DEVERÃO SEGUIR TODAS AS RECOMENDAÇÕES CONSTANTES DAS SEGUINTES NORMAS DA ABNT: NBR12655, NBR4880, NBR 7481, NBR 7482 E NBR 7483.

[illegible]